

* 红色框不印刷

Sinocare三诺

公司名称	三诺生物传感股份有限公司	须符合HSF检测	
文件名称	Safe-Accu2操作指南	文件编号	C-36300439
文件版本	B.2	物料编码	36300439
图文尺寸	展开尺寸200*285mm	图文比例	1: 1
制作材料	128g铜版纸, 四等分, 双面印刷	单位	毫米 (mm)

文件版本	变更时间	变更说明	变更人
B.1	2018.11.07	初版编制	黎辉雄
B.2	2022.02.25	依据ECR202201007 CE标志由5mm改为6mm; 修改制造商信息中的电话、邮箱、网址; 增加Test strip文字; 删除采血笔中的Sinocare文字; STEP 13改为STEP 14; 增加第6步中的血滴符号	刘松艳

编制:	_____ 刘松艳 _____	_____ 2022 年 02 月 25 日 _____
审核:	_____	_____ 年 ____ 月 ____ 日 _____
批准:	_____	_____ 年 ____ 月 ____ 日 _____

Sinocare

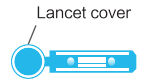
Safe-Accu 2 Quick Guide

Prepare Materials

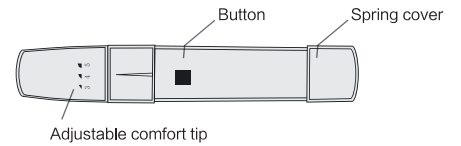
Safe-Accu 2 Meter



Lancet



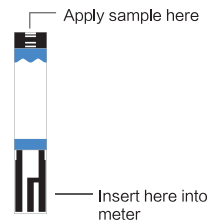
Lancing device



Strip vial



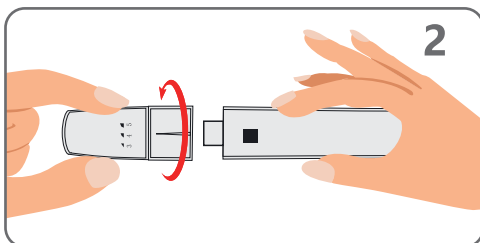
Test strip



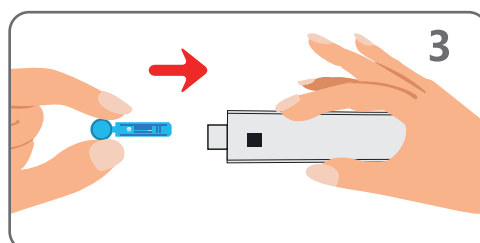
⚠ Before test, please read quick guide and user manual carefully.



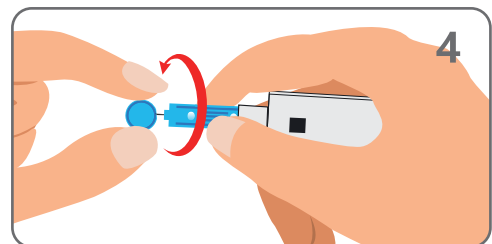
STEP 1: Wash your hands with soap or use an alcohol swab to clean the fingertip.



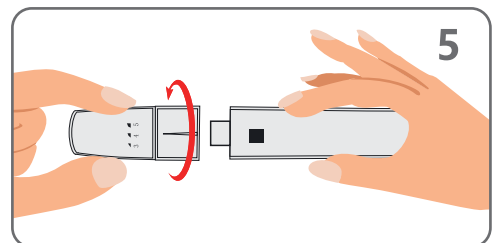
STEP 2: Unscrew the lancing device cover.



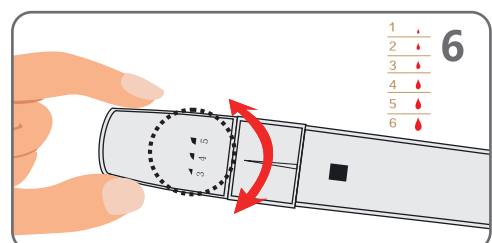
STEP 3: Insert a lancet into the lancing device until it comes to a full stop.



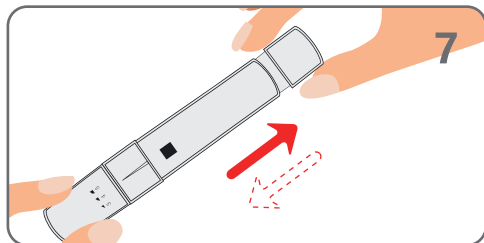
STEP 4: Twist and pull to remove the lancet protector. Retain the lancet protector for safe lancet disposal.



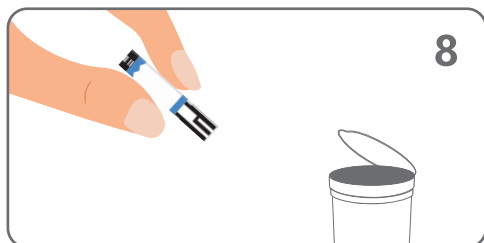
STEP 5: Screw the lancing device cover back on.



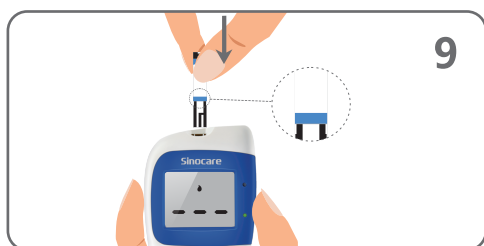
STEP 6: Twist the adjustable comfort tip to adjust the puncture depth.



STEP 7: Pull the spring cover back to arm the lancing device.



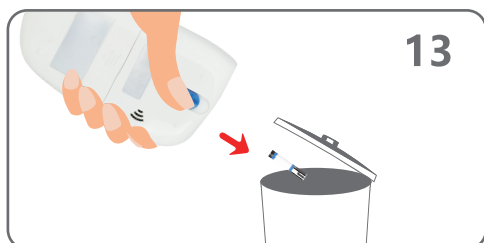
STEP 8: Take a strip out of the strip vial. Immediately close the vial lid.



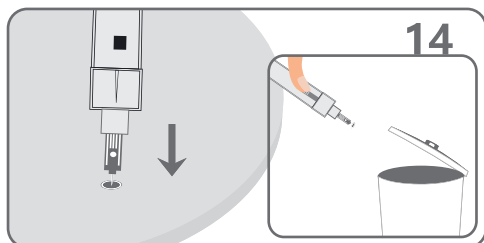
STEP 9: Fully insert the test strip into the meter Test Strip Port until it stops.



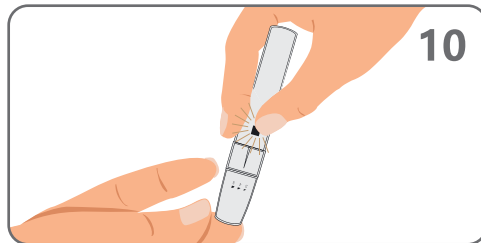
STEP 12: After a 9-second count down, the meter displays the test result.



STEP 13: Eject the strip. Discard the used Safe-Accu blood glucose test strip carefully to avoid contamination.

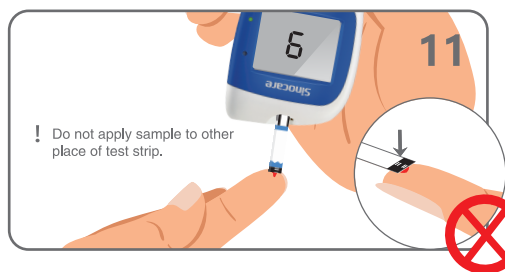


STEP 14: Remove the lancing device cover. With the lancet protector on the table, stick the needle of the lancet into the protector. Eject the lancet and screw the lancet cover back on.



STEP 10: Make sure the lancing device is pressed firmly to your finger. Press the button to lance.

Attention: If you did not produce a large enough blood sample, gently massage your finger. **DO NOT SQUEEZE YOUR FINGER.** Refer to step 6 to adjust the puncture depth and lance again.



STEP 11: When the Safe-Accu 2 blood glucose meter screen displays a flashing blood drop symbol, apply the blood sample to the tip of the Reaction Zone. You can apply the blood sample to either the left, middle, or right tip of the Reaction Zone.

Attention

- 1. Lancets and strip are for single use only. Do not reuse.
- 2. Do not share your lancing device with others.
- 3. Do not use expired strip.

Changsha Sinocare Inc.
 No. 265, Guyuan Road, Hi-Tech Zone, Changsha,
 Hunan Province, 410205, People's Republic of China
 E-mail: intl_mkt@sinocare.com
 Website: www.sinocareintl.com
 Customer service: +86-731-89935929

Shanghai International Holding Corp. GmbH (Europe)
 Eiffestraße 80, 20537 Hamburg, Germany.
 Tel: +49-40-2513175 Fax: +49-40-255726
 E-mail: shholding@hotmail.com

