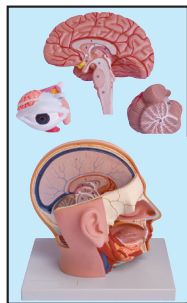
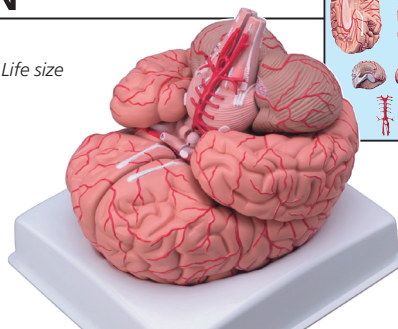


HEAD AND BRAIN



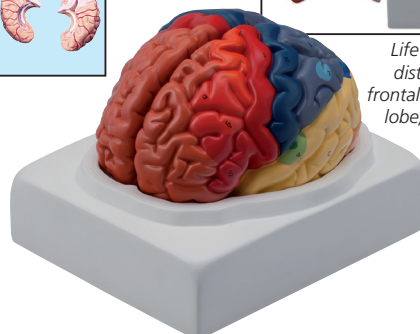
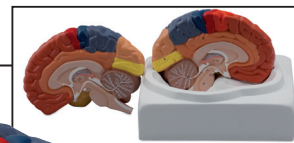
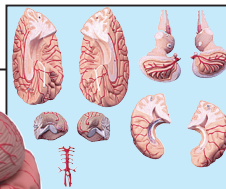
• **40010 HEAD DISSECTION - life size**
Size: 18x25x23 cm - 140 g - 4 parts - 1X

Life size



Can be divided into 9 parts showing the temporal and occipital lobes, the frontal and parietal lobes, the cerebellum, the brain stem and basilar artery

• **40020 BRAIN WITH ARTERIES**
Size: 16x18x16 cm - 1 kg - 9 parts - 1X

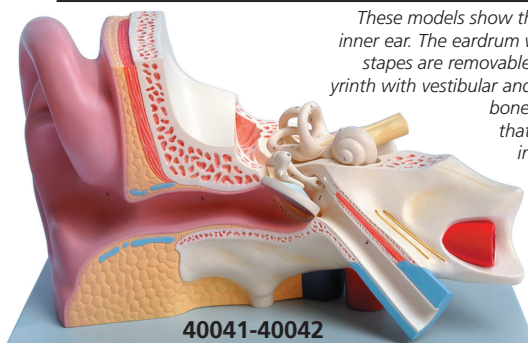


Life size brain with distinct colour for: frontal lobe, parietal lobe, occipital lobe, temporal lobe, motor cortex, somatosensory cortex, limbic cortex, cerebellum, brain stem

• **40021 REGIONAL BRAIN**
Size: 20x17x15 cm - 1.3 kg - 2 parts

SENSE ORGANS: EYE AND EAR

These models show the external, middle and inner ear. The eardrum with malleus, incus and stapes are removable. Also cochlea and labyrinth with vestibular and cochlear nerves and 2 bones sections (40042 only) that define the middle and inner ear are removable.



40041-40042

GIMA code	EAR SIZES	Kg	Parts	Mag
40041	33x23x21 cm	1	3	3X
40042	33x23x21 cm	2	5	3X

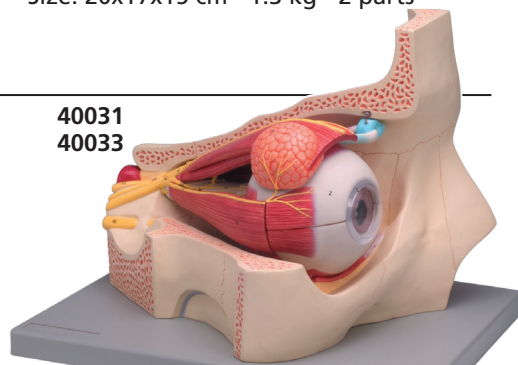
Cornea, iris, lens and vitreous body can be removed.

40030
Assembled

40030
Disassembled



40031
40033



Models show the eye ball with optic nerves and muscles in its natural position in the bony orbit

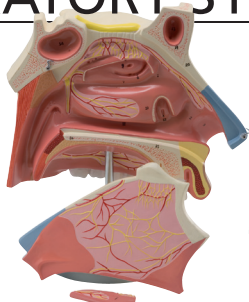
GIMA code	EYE WITH ORBIT SIZES	Kg	Parts	Mag
40030	15x17x27 cm	0.9	6	6X
40031	42x30x31 cm	3.2	4	5X
40033	42x30x31 cm	3.4	11	5X

RESPIRATORY SYSTEM: NASAL CAVITY, LARYNX



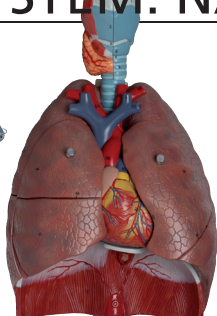
3x life size, the model shows a medial section of the nasal cavity. The nasal septum and part of the olfactory epithelium are removable to show deep internal structures.

• **40056 NASAL CAVITY**
Size: 15x20x30 cm - 1 kg - 3 parts - 3X
Mounted on base with stand.



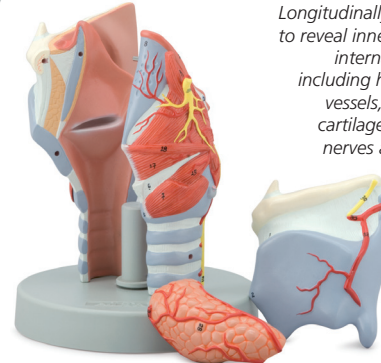
A life size reproduction of the complete human respiratory system. It is composed of 7 parts showing the larynx (dissected along the sagittal plane), the lungs (dissected along the frontal plane) and a 2-part heart.

• **40050 RESPIRATORY SYSTEM**
Size: 26x40x12 cm - 1.3 kg - 7 parts life size



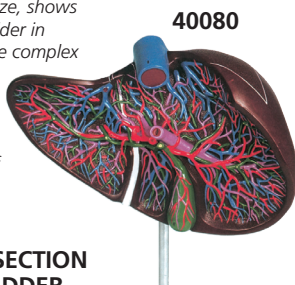
• **40058 LARYNX**
Size: 18x11x8 cm - 450 g - 5 parts - 2X
Mounted on a base with stand.

Longitudinally sectioned to reveal inner details of internal structure including hyoid bone, vessels, ligaments, cartilages, muscles, nerves and thyroid gland



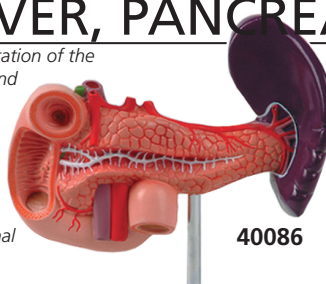
DIGESTIVE SYSTEMS: LIVER, PANCREAS, STOMACH

This model, 15x life size, shows the liver and gallbladder in open section with the complex network of vessels and bile ducts, displayed in different colours to clarity and ease of examination.



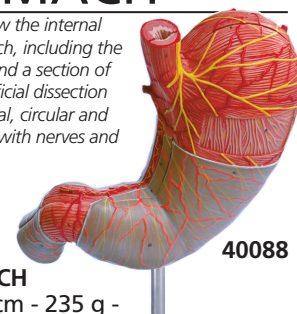
• **40080 LIVER SECTION WITH GALLBLADDER**
Size: 28x27x14 cm - 880 g - 1 part - 1.5X
Mounted on a base with stand.

Accurate representation of the pancreas, spleen and duodenum. The pancreas is open to show the entire pancreatic duct. The duodenum is partially dissected to expose its internal structure.



• **40086 PANCREAS, DUODENUM AND SPLEEN**
Size: 16x15x23 cm - 350 g - 1 part - 1X
Mounted on a base with stand.

Can be opened to show the internal structure of the stomach, including the mucosa, the pylorus, and a section of the gastric wall. Superficial dissection exposes the longitudinal, circular and oblique muscle layers, with nerves and vascular structures



• **40088 STOMACH**
Size: 16x14.5x5 cm - 235 g - 2 parts - 1.5X
Mounted on a base with stand.