

Ambulatory Blood Pressure Monitor

TM-2430

Clinically
Validated



- 24 hour ambulatory blood pressure monitoring
- Light weight & compact size
- Oscillometric measuring method
- Battery Power (3 alkaline or Ni-Cd/Ni-MH "AA")
- Data output to computer or printer
- RS-232C Connectivity

Doctor Pro3 Blood Pressure Analysis Software

- Setting up all the parameters
- Various formats of graphs for further diagnoses
 - ◆ Trend
 - ◆ Correlation
 - ◆ Histograms
 - ◆ Circadian rhythm analysis
 - ◆ Hyperbolic index analysis



Time	Systolic Pressure (mmHg)	Diastolic Pressure (mmHg)	Pulse Rate (b/min)	Heart Rate (b/min)	HRV (ms)	HRV (ms)	HRV (ms)	HRV (ms)	HRV (ms)
00:00:00	110	70	70	70	100	100	100	100	100
00:05:00	115	75	75	75	105	105	105	105	105
00:10:00	120	80	80	80	110	110	110	110	110
00:15:00	125	85	85	85	115	115	115	115	115
00:20:00	130	90	90	90	120	120	120	120	120
00:25:00	135	95	95	95	125	125	125	125	125
00:30:00	140	100	100	100	130	130	130	130	130
00:35:00	145	105	105	105	135	135	135	135	135
00:40:00	150	110	110	110	140	140	140	140	140
00:45:00	155	115	115	115	145	145	145	145	145
00:50:00	160	120	120	120	150	150	150	150	150
00:55:00	165	125	125	125	155	155	155	155	155
01:00:00	170	130	130	130	160	160	160	160	160
01:05:00	175	135	135	135	165	165	165	165	165
01:10:00	180	140	140	140	170	170	170	170	170
01:15:00	185	145	145	145	175	175	175	175	175
01:20:00	190	150	150	150	180	180	180	180	180
01:25:00	195	155	155	155	185	185	185	185	185
01:30:00	200	160	160	160	190	190	190	190	190
01:35:00	205	165	165	165	195	195	195	195	195
01:40:00	210	170	170	170	200	200	200	200	200
01:45:00	215	175	175	175	205	205	205	205	205
01:50:00	220	180	180	180	210	210	210	210	210
01:55:00	225	185	185	185	215	215	215	215	215
02:00:00	230	190	190	190	220	220	220	220	220
02:05:00	235	195	195	195	225	225	225	225	225
02:10:00	240	200	200	200	230	230	230	230	230
02:15:00	245	205	205	205	235	235	235	235	235
02:20:00	250	210	210	210	240	240	240	240	240
02:25:00	255	215	215	215	245	245	245	245	245
02:30:00	260	220	220	220	250	250	250	250	250
02:35:00	265	225	225	225	255	255	255	255	255
02:40:00	270	230	230	230	260	260	260	260	260
02:45:00	275	235	235	235	265	265	265	265	265
02:50:00	280	240	240	240	270	270	270	270	270
02:55:00	285	245	245	245	275	275	275	275	275
03:00:00	290	250	250	250	280	280	280	280	280
03:05:00	295	255	255	255	285	285	285	285	285
03:10:00	300	260	260	260	290	290	290	290	290
03:15:00	305	265	265	265	295	295	295	295	295
03:20:00	310	270	270	270	300	300	300	300	300
03:25:00	315	275	275	275	305	305	305	305	305
03:30:00	320	280	280	280	310	310	310	310	310
03:35:00	325	285	285	285	315	315	315	315	315
03:40:00	330	290	290	290	320	320	320	320	320
03:45:00	335	295	295	295	325	325	325	325	325
03:50:00	340	300	300	300	330	330	330	330	330
03:55:00	345	305	305	305	335	335	335	335	335
04:00:00	350	310	310	310	340	340	340	340	340
04:05:00	355	315	315	315	345	345	345	345	345
04:10:00	360	320	320	320	350	350	350	350	350
04:15:00	365	325	325	325	355	355	355	355	355
04:20:00	370	330	330	330	360	360	360	360	360
04:25:00	375	335	335	335	365	365	365	365	365
04:30:00	380	340	340	340	370	370	370	370	370
04:35:00	385	345	345	345	375	375	375	375	375
04:40:00	390	350	350	350	380	380	380	380	380
04:45:00	395	355	355	355	385	385	385	385	385
04:50:00	400	360	360	360	390	390	390	390	390
04:55:00	405	365	365	365	395	395	395	395	395
05:00:00	410	370	370	370	400	400	400	400	400
05:05:00	415	375	375	375	405	405	405	405	405
05:10:00	420	380	380	380	410	410	410	410	410
05:15:00	425	385	385	385	415	415	415	415	415
05:20:00	430	390	390	390	420	420	420	420	420
05:25:00	435	395	395	395	425	425	425	425	425
05:30:00	440	400	400	400	430	430	430	430	430
05:35:00	445	405	405	405	435	435	435	435	435
05:40:00	450	410	410	410	440	440	440	440	440
05:45:00	455	415	415	415	445	445	445	445	445
05:50:00	460	420	420	420	450	450	450	450	450
05:55:00	465	425	425	425	455	455	455	455	455
06:00:00	470	430	430	430	460	460	460	460	460
06:05:00	475	435	435	435	465	465	465	465	465
06:10:00	480	440	440	440	470	470	470	470	470
06:15:00	485	445	445	445	475	475	475	475	475
06:20:00	490	450	450	450	480	480	480	480	480
06:25:00	495	455	455	455	485	485	485	485	485
06:30:00	500	460	460	460	490	490	490	490	490
06:35:00	505	465	465	465	495	495	495	495	495
06:40:00	510	470	470	470	500	500	500	500	500
06:45:00	515	475	475	475	505	505	505	505	505
06:50:00	520	480	480	480	510	510	510	510	510
06:55:00	525	485	485	485	515	515	515	515	515
07:00:00	530	490	490	490	520	520	520	520	520
07:05:00	535	495	495	495	525	525	525	525	525
07:10:00	540	500	500	500	530	530	530	530	530
07:15:00	545	505	505	505	535	535	535	535	535
07:20:00	550	510	510	510	540	540	540	540	540
07:25:00	555	515	515	515	545	545	545	545	545
07:30:00	560	520	520	520	550	550	550	550	550
07:35:00	565	525	525	525	555	555	555	555	555
07:40:00	570	530	530	530	560	560	560	560	560
07:45:00	575	535	535	535	565	565	565	565	565
07:50:00	580	540	540	540	570	570	570	570	570
07:55:00	585	545	545	545	575	575	575	575	575
08:00:00	590	550	550	550	580	580	580	580	580
08:05:00	595	555	555	555	585	585	585	585	585
08:10:00	600	560	560	560	590	590	590	590	590
08:15:00	605	565	565	565	595	595	595	595	595
08:20:00	610	570	570	570	600	600	600	600	600
08:25:00	615	575	575	575	605	605	605	605	605
08:30:00	620	580	580	580	610	610	610	610	610
08:35:00	625	585	585	585	615	615	615	615	615
08:40:00	630	590	590	590	620	620	620	620	620
08:45:00	635	595	595	595	625	625	625	625	625
08:50:00	640	600	600	600	630	630	630	630	630
08:55:00	645	605	605	605	635	635	635	635	635
09:00:00	650	610	610	610	640	640	640	640	640
09:05:00	655	615	615	615	645	645	645	645	645
09:10:00	660	620	620	620	650	650	650	650	650
09:15:00	665	625	625	625	655	655	655	655	655
09:20:00	670	630	630	630	660	660	660	660	660
09:25:00	675	635	635	635	665	665	665	665	665
09:30:00	680	640	640	640	670	670	670	670	670
09:35:00	685	645	645	645	675	675	675	675	675
09:40:00	690	650	650	650	680	680	680	680	680
09:45:00	695	655	655	655	685	685	685	685	685
09:50:00	700	660	660	660	690	690	690	690	690
09:55:00	705	665	665	665	695	695	695	695	695
10:00:00	710	670	670	670	700	700	700	700	700
10:05:00	715	675	675	675	705	705	705	705	705
10:10:00	720	680	680	680	710	710	710	710	710
10:15:00	725	685	685	685	715	715	715	715	715
10:20:00	730	690	690	690	720	720	720	720	720
10:25:00	735	695	695	695	725	725	725	725	725
10:30:00	740	700	700	700	730	730	730	730	730
10:35:00	745	705	705	705	735	735	735	735	735
10:40:00	750	710	710	710	740	740	740	740	740
10:45:00	755	715	715	715	745	745	745	745	745
10									

Ambulatory Blood Pressure Monitor TM-2430

The TM-2430 is a compact & lightweight ambulatory blood pressure monitor that incorporates our latest technology gained from over 20 years of manufacturing ambulatory BPMs. This monitor was validated in accordance with British Hypertension Society protocol and accuracy was proven to be A/A. Weighing only 215 grams at the size of a cigarette pack, the TM-2430 can be carried by patients painlessly around-the-clock. Doctor Pro 3 Blood Pressure Analysis Software enables easy analysis of the data taken by the TM-2430, as well as parameter settings. (Optional)

■ **24 hour ambulatory blood pressure monitoring**

■ **Light weight & compact size**

■ **Oscillometric measuring method**

■ **Battery power (3 alkaline or Ni-Cd/Ni-MH "AA")**

■ **Data output to computer or printer**

■ **RS-232C connectivity**

■ **Automatically sets:**

◆ Proper cuff pressure

◆ Exhaust speed

◆ End of measurement

■ **New pulse correction algorithm for faster measurement & noise rejection**

■ **Automatic or manual measurement**

■ **Date/Time display: Until 2096 & auto leap year**

■ **Multiple measurement intervals - adapts to patient's exact requirements.**

Specifications

BP Measurement		
Measurement Method		Oscillometric
Measuring Range	Blood Pressure	40 ~ 280 mmHg (SYS - 60 ~ 280mmHg/DIA - 40 ~ 160mmHg)
	Pulse	30 ~ 200 bpm
Accuracy	Blood Pressure	±3 mmHg
	Pulse	±5 %
Pressurization	Method	Micro pump
	Maximum Pressure	300 mmHg
	Preset Pressure	Automatic
Depressurization	Method	Electric Controlled Exhaust Valve (ECEV)
	Safety System	A magnetic, solenoid valve opens when the pressure exceeds approximately 320 mmHg. Over 330 mmHg, an independent safety circuit exhausts air.
Interval Setting		5, 10, 15, 20, 30, 60, 120 min.
Clock		24 hour clock, calendar (until 2096)
Memory Data		Up to 300 sets of data
Power Supply	Battery	3x LR6("AA") type batteries - alkaline or Ni-MH "AA"
	Battery Life	Approx. 200 measurements
Temperature & Humidity	Operating Temperatures	10°C ~ 40°C (50°F ~ 104°F), Less than 85%RH (non-condensing)
	Storage & Transportation	-20°C ~ 55°C (14°F ~ 131°F), Less than 95%RH (non-condensing)
External Dimensions		72(W) x 27(H) x 100(D) mm/2.8(W) x 1.0(H) x 3.9(D) inches
Weight		Approx. 215g (0.47lb) without cuff

Options and Accessories

TM2430-02A	Large cuff for left arm (28-36cm)
TM2430-06A	Adult cuff for left arm (20-31cm)
TM2430-07A	Small cuff for left arm (15-22cm)
TM2430-09A	Adult cuff for right arm (20-31cm)
TM-CF306A	Disposable cuff (10pcs/Box)
Doctor Pro 3	Blood pressure analysis software

Doctor Pro 3

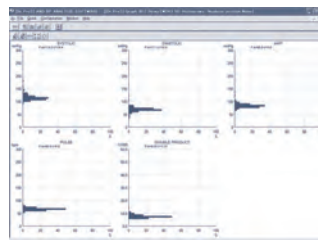
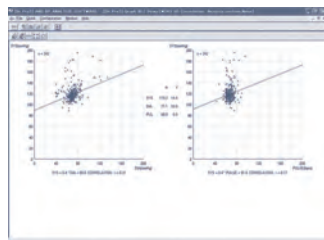
Blood Pressure Analysis Software (TM9501)

Doctor Pro 3 analysis software was designed to enhance diagnosing a patient's data taken by our ambulatory BP monitors (TM-2430) for further treatment. The following formats of graphs are available; Trend, Correlation, Histograms, Circadian Rhythm Analysis, and Hyperbolic Index (HBI or BP load) Analysis in addition to tabular data format. A file merge function is added to the latest version making closer analysis possible.

Also, the Doctor Pro 3 accepts UA-767PC data for long term diagnose.

TM-9501

Analysis software program



Doctor Pro 3 Hardware Requirements

CPU	Pentium 4 1GHz or greater
RAM	Minimum 1GB (32bit), 2GB (64bit)
HDD	Minimum 1GB free space
Drive	CD-ROM drive
Interface	USB 2.0/1.1
OS	Windows™ 8 (32bit/64bit), 7 (32bit/64bit), Vista (32bit/64bit), or XP (SP2) - .NET Framework 3.5 or greater - MDAC 2.6 or greater

Windows™ is a registered trademark of Microsoft Corporation.



A&D Company, Limited

3-23-14 Higashi-Ikebukuro, Toshima-ku, Tokyo 170-0013 Japan
Telephone:[81](3)5391-6132 Fax:[81](3)5391-6148
1-243, Asahi, Kitamoto-shi, Saitama, 364-8585 Japan
Telephone:[81](0485)93-1111 Fax:[81](0485)93-1119
<http://www.aandd.jp>

A&D ENGINEERING, INC.

1756 Automation Parkway, San Jose, CA 95131 U.S.A.
Telephone:[1](408)263-5333 Fax:[1](408)263-0119

A&D INSTRUMENTS LIMITED

Unit 24/26 Blacklands Way Abingdon Business Park,
Abingdon, Oxon OX14 1DY UNITED KINGDOM
Telephone:[44](1235) 550420 Fax:[44](1235) 550485
(Authorized Representative Established in the European Community)

A&D AUSTRALASIA PTY. LTD.

32 Dew Street, Thebarton, South Australia 5031 AUSTRALIA
Telephone:[61](8)8301-8100 Fax:[61](8)8352-7409

A&D RUS CO., LTD.

Vereyskaya str.17, Moscow, 121357 RUSSIA
Telephone: [7] (495) 937-33-44 Fax: [7] (495) 937-55-66

A&D TECHNOLOGY TRADING (SHANGHAI) CO., LTD.

21A, Majesty Building, No.138 Pudong Avenue,
Pudong New Area, Shanghai, 200120, CHINA
Telephone: [86](21)33932340 Fax: [86](21)33932347