



B Classic  
STERILIZERS



B Futura



Supreme



Tethys H10 plus  
THERMAL-DISINFECTION



Tethys T60 - Tethys D60



Tethys T45



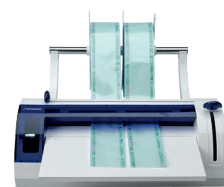
HMD  
H10 HMD ACCESSORY



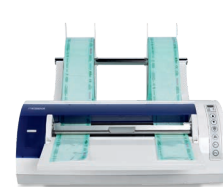
Thalya - Thalya PLUS  
HANDPIECE TREATMENT



Highea 3-6-9  
WASHING



Millseal+Manual  
THERMAL SEALERS



Millseal+Evo



Millseal Rolling

easy, it's Mocom

Our vision.



For over thirty years, safety, reliability and innovation have been the guiding principles behind all aspects of design and production at Mocom, the world's leading sterilization firm. The factors that set us apart, in terms of both skill and innovation, are conscientious attention to the choice of materials, ground-breaking technology, enforcement of strict production/quality control protocols and the wealth of experience accumulated by our qualified, specialised sterilization system designers. Mocom, sterilization first.



Making Your Life Better.

BU Medical Equipment  
Sede Legale ed Amministrativa  
Headquarters  
CEFLA s.c.  
Via Selice Provinciale, 23/a  
40026 Imola (BO) - Italy  
Tel. +39 0542 653111  
Fax +39 0542 653344

Stabilimento / Plant  
Via Bicocca, 14/C  
40026 Imola (BO) - Italy  
Tel. +39 0542 653441  
Fax +39 0542 653601  
www.mocom.it  
infomocom@mocom.it



B Futura  
Upgrading the best



MBFCB191500 03/2021  
Cefla s.c. reserves the right to modify the products illustrated in the photos without prior notice.  
According to the regulations in force, some products and/or features may have different availability and characteristics in areas outside of the European Union. Please contact your local distributor.



## B Futura

Designed to make your life easier, reduce costs and guarantee higher efficiency.



# The first one capable of using tap water

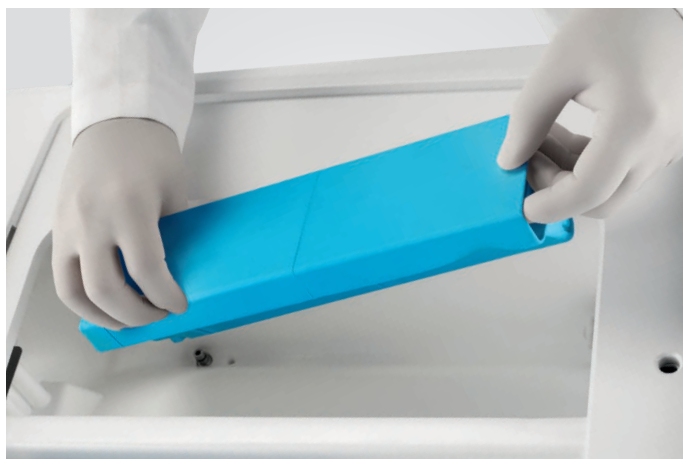
## Incorporated filtration in a stand-alone machine

The incorporated system makes it possible to increase the surgery efficiency, eliminating demineralised water management issues. Recipients' storage and deterioration of machine internal components caused by poor water quality will be a thing of the past.



### Operating principle

Unlike traditional sterilizers, Futura does not require any external water connection for mains water treatment. Thanks to the demineralisation filter on the main tank, the user can fill the latter with plain tap water, thereby significantly optimising spaces, streamlining processes and achieving considerable savings. Futura's filtration system guarantees unprecedented ease of operation.



### Efficiency and saving

Never before has a sterilizer provided such high performance and low usage costs. Since water is demineralised by Futura's filter, the user does not need to source demineralised water: they will only have to fill up the machine tank with tap water.



# Advanced connectivity

## Incorporated WiFi for remote support and optional cloud

At the end of each sterilization cycle, the machine stores a report inside its memory. The user can download the cycles in PDF format at any time through the front USB port or automatically store them in the cloud using the WiFi and Di.V.A. system.



### Di.V.A.

Di.V.A. stands for Digital Virtual Assistant. It is the first cloud-based control and traceability system for MOCOM sterilization devices. Once saved, data will be available for operators by accessing a dedicated web page. Di.V.A. allows you to:

- Get access to tutorial videos
- Display the executed cycles
- Check machine efficiency and status
- Read the machine usage statistics
- Monitor the frequency of sterilization tests



### Remote technical support with Easy Check

All sterilizers of the Futura range are equipped with incorporated WiFi and Ethernet port. Connected to the Internet by enabling the Easy Check service, they can receive remote support. Intervention times can be significantly reduced thereby allowing technicians to keep machines constantly efficient.



### Printer

The Futura range can be completed with an external printer available as an optional accessory, able to provide reports or bar code labels.

### Traceability software

MyTrace is Cefla's traceability software available for Futura. By using this programme, each set of sterilized instruments can be associated to the patient through a bar code. This essential software completes the sterilization process and provides legal protection to dentists.



# Ease of use

## 4.3" colour touch-screen for a user-friendly interface

The B Futura sterilizer is a smart and essential working tool that ensures excellent performance also thanks to the colour LCD touch screen and user-friendly interface. Each control corresponds to icons that ensure an immediate reading of the machine status.



### Delayed start

Thanks to the delayed start option it is possible to postpone the start of the machine cycles, thereby optimising its usage.

### Extra drying

This function is used to set customised drying times for demanding loads.



### Custom cycle

Cycle parameters can be set to meet specific user needs (in complete safety) by choosing from among a wide range of standard-compliant values.

### User ID

Authorises personnel in charge to get access to the sterilizer. By entering a security code (PIN number), operators can keep track of the usage history of the machine while ensuring process control.



### Test reminder

By setting this function on the display, Futura will inform the user when a Vacuum Test, Helix Test or Bowie & Dick test must be carried out. Therefore, it will become impossible to forget about these important operations.

# Accessories

A full range of accessories to expand Futura’s functions.

- 1

**External printer**

Connected to the Futura sterilizers via an RS232 serial port, it allows executed cycle data to be printed on rolls of thermal paper or bar code labels.
- 2

**Front filling kit**

Allows the operator to fill the main tank frontally through a quick coupling..
- 3

**Automatic filling kit**

Consists of an external pump powered by the sterilizer and allows demineralised water to be withdrawn from a tank or recipient.
- 4

**SV aux kit**

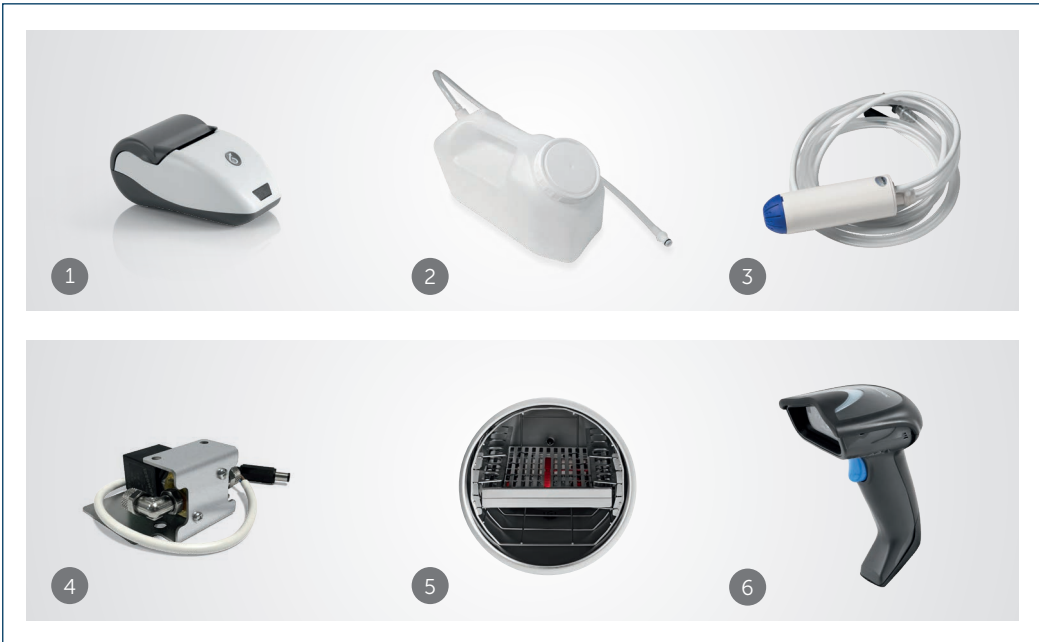
This kit allows the sterilizer to be interfaced with the surgery water supply system so the sterilizer only draws water from the system as and when necessary.
- 5

**Modular tray holder**

Modular housing system for filling the sterilizer. Provided with 3 pairs of tray-housing shelves, it allows for the full use of the chamber diameter and the introduction of even cumbersome loads.
- 6

**Bar code reader**

The bar code reader, usable on the most common PCs, makes it possible to complete the traceability process and associate bar code labels to patients.



Technical data	B Futura 17	B Futura 22	B Futura 28
Power supply voltage	220/240V 50Hz 220/230V 60Hz		
Rated power	2300 W		
External dimensions W x H x D	480 x 500 x 600 mm		
Chamber dimensions Diam. x Depth	250 x 350 mm	250 x 450 mm	280 x 450 mm
Total weight	51 kg	52 kg	53 kg
Tank capacity	4.5 litres		
Autonomy (with max. water level)	From 7 to 11 cycles	From 6 to 10 cycles	From 5 to 9 cycles

Sterilization cycles 220/230 V						
CYCLE	Cycle type	Sterilization time	B Futura 17	B Futura 22	B Futura 28	Drying *
		(min.)	Cycle times including sterilization times, net of drying times (min.)			
134°C UNIVERSAL	B	4	27	29	37	13-17
121°C UNIVERSAL	B	20	43	46	50	13-17
134°C VELOCE	S	4	20	23	26	1
134°C WRAPPED SOLID INSTRUMENTS	S	4	18	22	26	13-17
134°C PRION	B	18	41	43	51	13-17
XXX°C CUSTOM	S	Cycle can be personalised by user at temperatures 134 °C / 121 °C, process times starting from 4' (134 °C) or 20' (121 °C) with adjustable drying				
VACUUM TEST	TEST		18	18	19	
HELIX / B&D TEST	TEST		20	24	28	
VACUUM + HELIX / B&D TEST (executed in sequence)	TEST		42	46	51	

\* Drying varies according to machine model and volume

Note: times do not take the max. pre-heating time into account (10 min.).

Note: times may vary depending on the load and power supply.

Note: 120 V model times may undergo increments up to a max. of 20%.